



## Product Data Sheet

# STEPMASTER STAIRNOSINGS

## STEPMASTER 700 SERIES

Stepmaster offers a comprehensive range of architecturally designed profiles to meet every demand, from heavy duty traffic in railway stations to the more general retail/office use, providing maximum pedestrian safety and WHS requirements. Stepmaster Stair Nosings are manufactured to meet and exceed the Australian standards and building codes.

### SPECIFICATIONS

PRODUCT	<b>Stepmaster 700 Series</b>
CODE	<b>SMN714</b>
BASE MATERIAL	Alloy: 6060, Temper: T5
FINISH	Clear Anodised – 25Um
TREAD WIDTH	75mm
FRONT DEPTH	35mm
TREAD THICKNESS	4.8mm
INSERT TYPE	Anodised Alloy: 6060, Temper: T5
PRODUCT WARRANTY	2 Years (As per Walmay's standard warranty conditions)
INSERT SLIP RATING	P5 Classification (Highest available)
CODE COMPLIANCE	AS1428.1-2009 Check floor finish colour for luminance contrast requirements
FIXING METHOD	Screw fixed
APPLICATION	Pre-drilled and countersunk for secret screw fixing – Once installed, insert covers all fixings. Designed for use over plush pile carpets

### \*STANDARD COLOURS

#### Aluminium



CLEAR ANODISED



BLACK ANODISED



GOLD ANODISED

#### Insert



CLEAR ANODISED

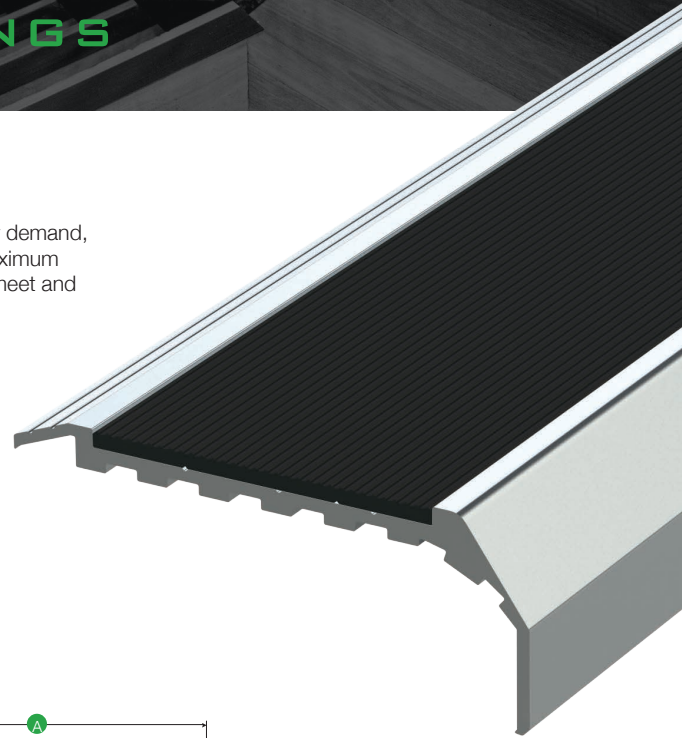


BLACK ANODISED

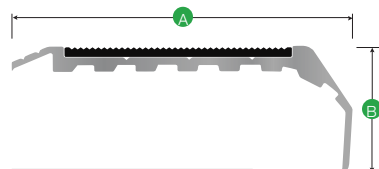


GOLD ANODISED

\*Other colours available on request



### PROFILE

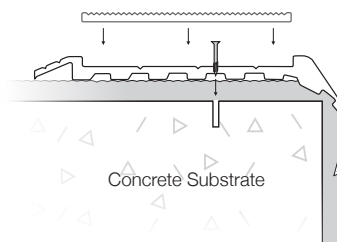


A 85mm

B 30mm

\* Insert measures 54mm wide

### Screw fixed



### HOW TO SPECIFY

Copy the prewritten specification below and update all sections in brackets to create your project specification.

#### Description

Stepmaster stairnosing profile series 700, Code: SMN714 in (Clear/Black/Sovereign Gold) anodised finish aluminium with insert colour (Clear/Black/Sovereign Gold). To be installed to the manufacturer's instructions in accordance to the AS/NZS 1428.1.4.2009

#### Manufacturer

Walmay Architectural Products Pty Ltd  
 P: 1300 393 493  
 E: sales@walmay.com.au  
 W: www.walmay.com.au

#### Example – Typical Specification

Stepmaster stairnosing profile 700 series, SMN714 in clear anodised aluminium finish, with insert clear anodised. To be installed in accordance to the manufacturer's instructions in accordance to the AS/NZS 1428.1.4.2009