



Product Data Sheet

STEPMASTER STAIRNOSINGS

STEPMASTER 700 SERIES

Stepmaster offers a comprehensive range of architecturally designed profiles to meet every demand, from heavy duty traffic in railway stations to the more general retail/office use, providing maximum pedestrian safety and WHS requirements. Stepmaster Stair Nosings are manufactured to meet and exceed the Australian standards and building codes.

SPECIFICATIONS

| | |
|--------------------|--|
| PRODUCT | Stepmaster 700 Series |
| CODE | SMN715 |
| BASE MATERIAL | Alloy: 6060, Temper: T5 |
| FINISH | Clear Anodised – 25Um |
| TREAD WIDTH | 96mm |
| FRONT DEPTH | 35mm |
| TREAD THICKNESS | 4.8mm |
| INSERT TYPE | Anodised Alloy: 6060, Temper: T5 |
| PRODUCT WARRANTY | 2 Years (As per Walmay's standard warranty conditions) |
| INSERT SLIP RATING | P5 Classification (Highest available) |
| CODE COMPLIANCE | AS1428.1-2009 Check floor finish colour for luminance contrast requirements |
| FIXING METHOD | Screw fixed |
| APPLICATION | Surface mounted on hard floor finishes – Concrete, Timber etc. |

*STANDARD COLOURS

Aluminium



CLEAR ANODISED



BLACK ANODISED



GOLD ANODISED

Insert



CLEAR ANODISED

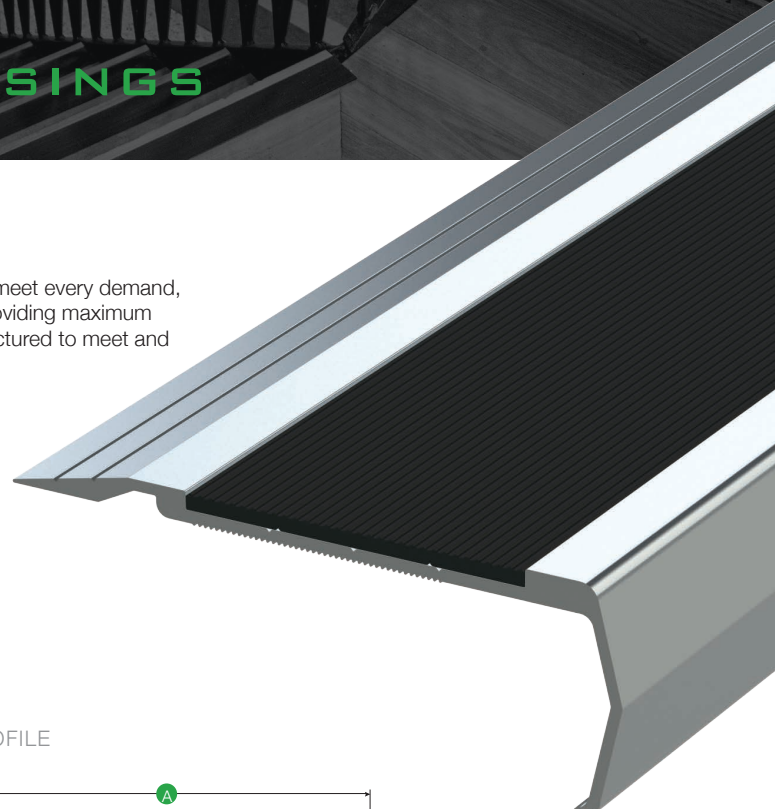


BLACK ANODISED

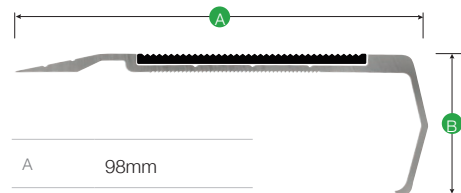


GOLD ANODISED

*Other colours available on request



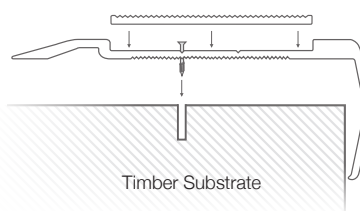
PROFILE



* Insert measures 54mm wide

TYPICAL INSTALLATION

Screw fixed



HOW TO SPECIFY

Copy the prewritten specification below and update all sections in brackets to create your project specification.

Description

Stepmaster stairnosing profile series 700, Code: SMN715 in (Clear/Black/Sovereign Gold) anodised finish aluminium with insert colour (Clear/Black/Sovereign Gold). To be installed to the manufacturer's instructions in accordance to the AS/NZS 1428.1.4.2009

Manufacturer

Walmay Architectural Products Pty Ltd
 P: 1300 393 493
 E: sales@walmay.com.au
 W: www.walmay.com.au

Example – Typical Specification

Stepmaster stairnosing profile 700 series, SMN715 in clear anodised aluminium finish, with insert colour clear anodised. To be installed in accordance to the manufacturer's instructions in accordance to the AS/NZS 1428.1.4.2009