



## Product Data Sheet

# STEPMASTER STAIRNOSINGS

## STEPMASTER 100 SERIES

Stepmaster offers a comprehensive range of architecturally designed profiles to meet every demand, from heavy duty traffic in railway stations to the more general retail/office use, providing maximum pedestrian safety and WHS requirements. Stepmaster Stair Nosings are manufactured to meet and exceed the Australian standards and building codes.

### SPECIFICATIONS

PRODUCT	<b>Stepmaster 100 Series</b>
CODE	<b>SMN113</b>
BASE MATERIAL	Alloy: 6060, Temper: T5
FINISH	Clear Anodised – 25Um
TREAD WIDTH	58mm
FRONT DEPTH	10mm
TREAD THICKNESS	4.8mm
INSERT TYPE	Solid Epoxy Based Carborundum – Heavy Duty, External Grade
PRODUCT WARRANTY	2 Years (As per Walmay's standard warranty conditions)
INSERT SLIP RATING	P5 Classification (Highest available)
CODE COMPLIANCE	AS1428.1-2009 Check floor finish colour for luminance contrast requirements
FIXING METHOD	Screw fixed
APPLICATION	Surface mounted on hard floor finishes – Concrete, Timber etc.

### \*STANDARD COLOURS

#### Aluminium



CLEAR ANODISED



BLACK ANODISED



GOLD ANODISED

#### Insert



SAFETY YELLOW



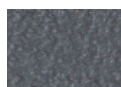
BLACK



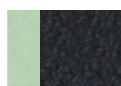
LUMINESCENT



RED

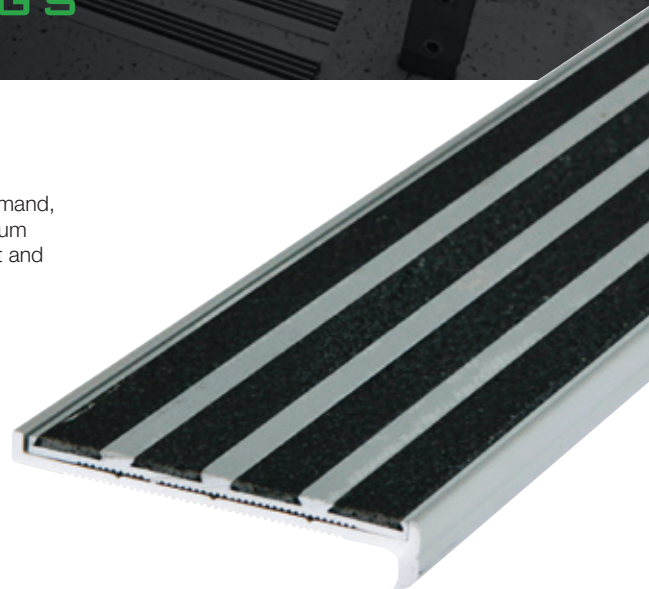


GREY

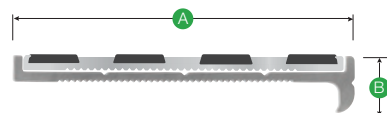


LUM. + BLACK

\*Other colours available on request



### PROFILE



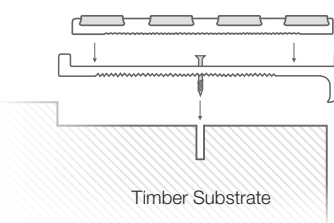
A 58mm

B 10mm

\* Insert measures 54mm wide

### TYPICAL INSTALLATION

Screw fixed



### HOW TO SPECIFY

Copy the prewritten specification below and update all sections in brackets to create your project specification.

#### Description

Stepmaster stairnosings profile series 100, Code: SMN113 in (Clear/Black/Sovereign Gold) anodised finish aluminium with insert colour (SY/BLK/R/G/LUM/LUM+BLK). To be installed to the manufacturer's instructions in accordance to the AS/NZS 1428.1.4.2009

#### Manufacturer

Walmay Architectural Products Pty Ltd  
 P: 1300 393 493  
 E: sales@walmay.com.au  
 W: www.walmay.com.au

#### Example – Typical Specification

Stepmaster stairnosings profile 100 series, SMN113 in clear anodised aluminium finish, with insert colour black.  
 To be installed in accordance to the manufacturer's instructions in accordance to the AS/NZS 1428.1.4.2009