



Product Data Sheet

STEPMASTER STAIRNOSINGS

STEPMASTER 400 SERIES

Stepmaster offers a comprehensive range of architecturally designed profiles to meet every demand, from heavy duty traffic in railway stations to the more general retail/office use, providing maximum pedestrian safety and WHS requirements. Stepmaster Stair Nosings are manufactured to meet and exceed the Australian standards and building codes.

*SPECIFICATIONS

PRODUCT	Stepmaster 400 Series
CODE	SMN415
BASE MATERIAL	Alloy: 6060, Temper: T5
FINISH	Clear Anodised – 25Um
TREAD WIDTH	96mm
FRONT DEPTH	35mm
TREAD THICKNESS	4.8mm
INSERT TYPE	Carborundum tape – Heavy Duty, External Grade
PRODUCT WARRANTY	2 Years (As per Walmay's standard warranty conditions)
INSERT SLIP RATING	P5 Classification (Highest available)
CODE COMPLIANCE	AS1428.1-2009 Check floor finish colour for luminance contrast requirements
FIXING METHOD	Screw fixed
APPLICATION	Surface mounted on hard floor finishes – Concrete, Timber etc.

STANDARD COLOURS

Aluminium



CLEAR ANODISED



BLACK ANODISED

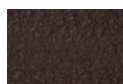


GOLD ANODISED

Insert



SAFETY YELLOW



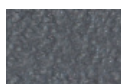
BLACK



LUMINESCENT



RED

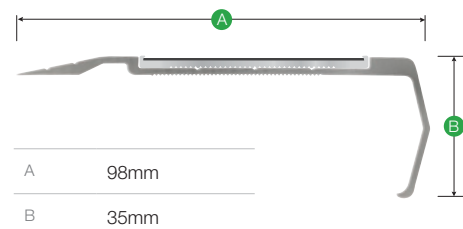


GREY

*Other colours available on request



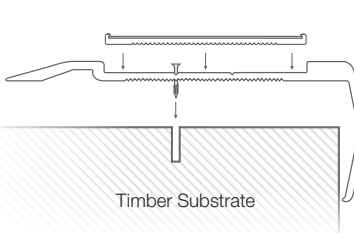
PROFILE



* Insert measures 54mm wide

TYPICAL INSTALLATION

Screw fixed



HOW TO SPECIFY

Copy the prewritten specification below and update all sections in brackets to create your project specification.

Description

Stepmaster stairnosing profile series 400, Code: SMN415 in (Clear/Black/Sovereign Gold) anodised finish aluminium with insert colour (SY/BLK/R/G/LUM). To be installed to the manufacturer's instructions in accordance to the AS/NZS 1428.1.4.2009

Manufacturer

Walmay Architectural Products Pty Ltd
 P: 1300 393 493
 E: sales@walmay.com.au
 W: www.walmay.com.au

Example – Typical Specification

Stepmaster stairnosing profile 400 series, SMN415 in clear anodised aluminium finish, with insert colour black. To be installed in accordance to the manufacturer's instructions in accordance to the AS/NZS 1428.1.4.2009

